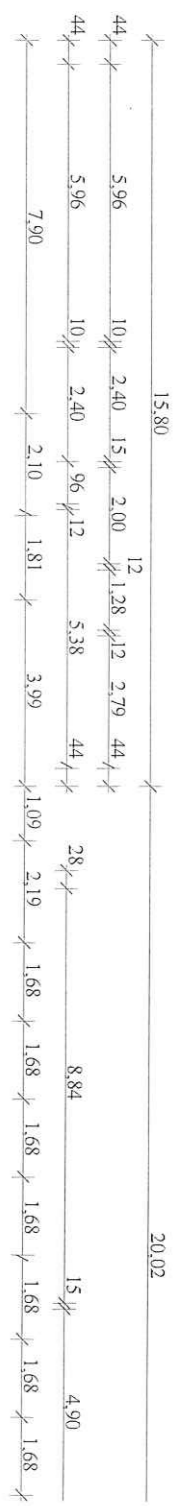
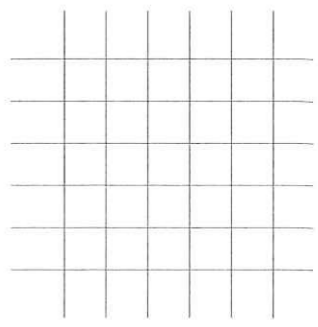
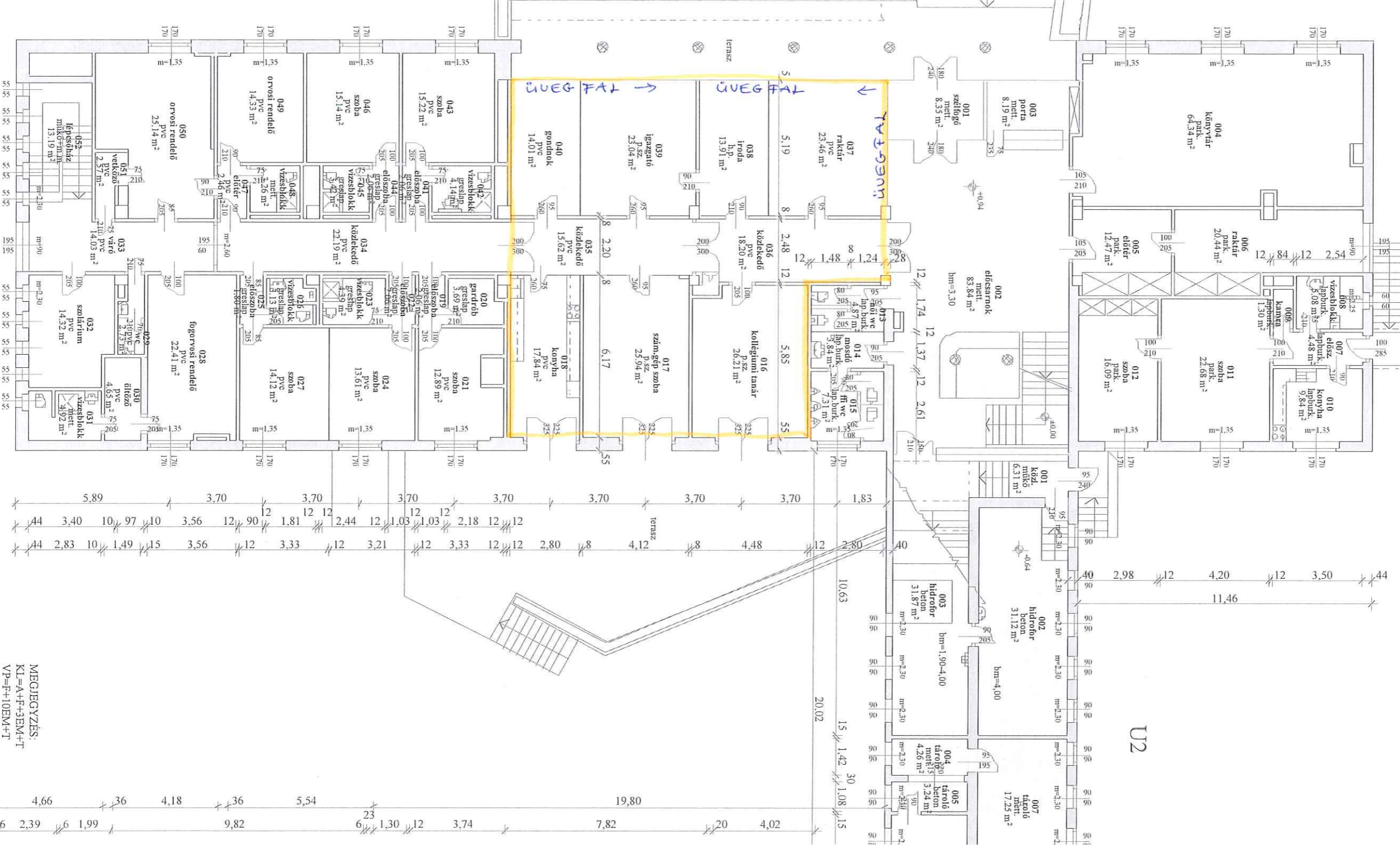
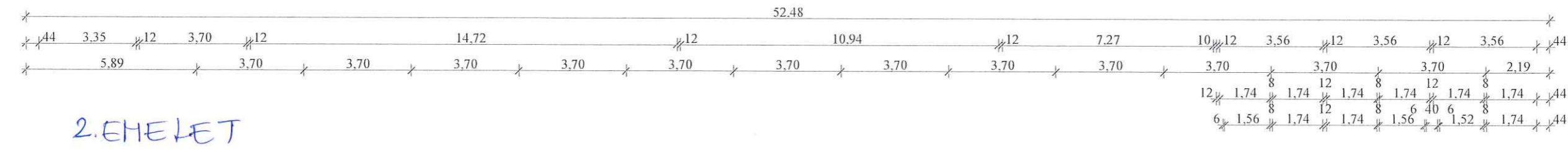
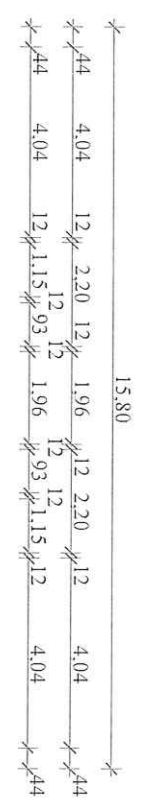


FÖLDSZINT
KL

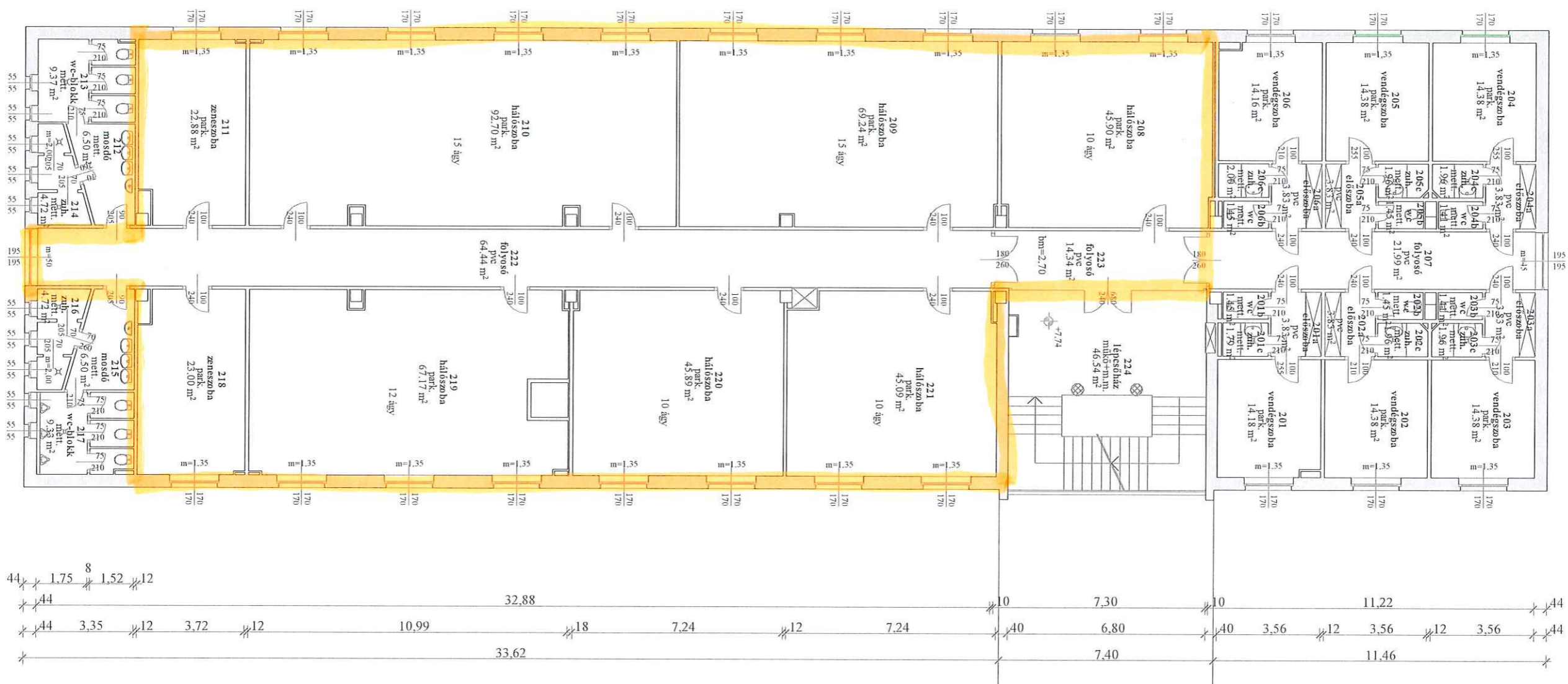


MEGJEGYZÉS:
 KL=A+F+3EM+T
 VP=F+10EM+T
 U2=F+1EM
 U3=F+1EM
 U4=F+1EM
 U5=F

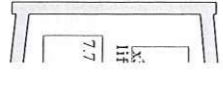
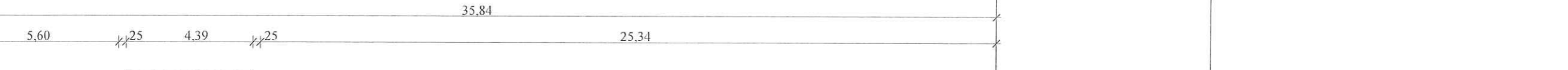
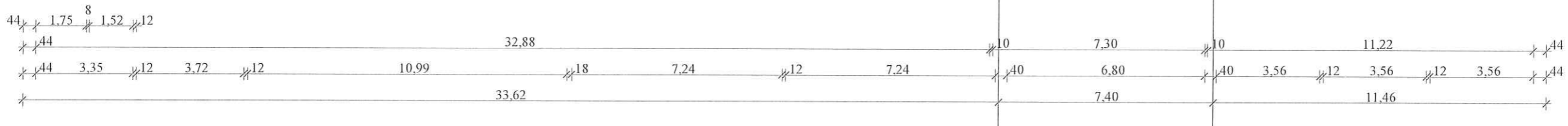


2.EMELET

KL



- MEGJEGYZÉS:
 KL=A+F+3EM+T
 VP=F+10EM+T
 U2=F+1EM
 U3=F+1EM
 U4=F+1EM
 U5=F



U2